



WROUTER

Owner's Manual

Important Notice

1. Read these instruction manual
2. Keep the manual
3. Keep remind all warnings
4. Follow all instructions
5. Do not use this equipments near water or moisture
6. Clean only with dry cloth
7. Do not block any ventilation openings. Install in accordance with the manufacturer's instructions
8. Do not use near any heat sources such as radiators, stoves or heat registers
9. Use grounding-type plug
10. Use only attachments/accessories specified by the manufacturers
11. Unplug this equipment during lightning storms or when unused for long periods of time
12. Refer all servicing to qualified service personnel. Servicing is required when the equipment has been damaged in any way, such as power-supply cord or plug is damaged, liquid has been spilled or objects have fallen into the equipment, the equipment has been exposed to rain or moisture, does not operate normally, or has been dropped. Manufacturer does not take any responsibility for repairing due to misused operation
13. Do not put any liquid material onto the equipment
14. Remove plug after checking the equipment power is off. Otherwise, it may cause equipment failure.

WARNING: Unqualified personnel are not able to repair this equipments.
To reduce the risk of electric shock, do not open bottom cover on purpose.

About Waversa Systems

Thanks for choosing

Waversa Systems' WROUTER.

Recent development of innovative IT/Digital technology brings vast changes in concept and environment of old Analog based High-end Audio market.

Waversa Systems is leading

New High-end Audio paradigm combining world top class IT with digital technology under the goal of developing sophisticated sound and design.

Waversa Systems is

Happy with your purchasing equipments and promises to become best partners for your audio life.

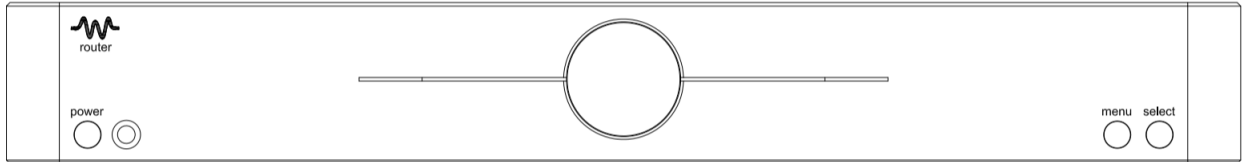
CEO Junho Shin

Key Features of the WROUTER

- Noise protected hardware construction.
- 802.11ac Wireless Router
- 4x Battery operated Audio Grade Ethernet ports and USB host ports.
- 1x WAN and 3x normal ethernet ports
- 1 x Built-in mSATA SSD and 1x Built-in M2 SATA slot for music storage
- Built-in Linear Power Supply.

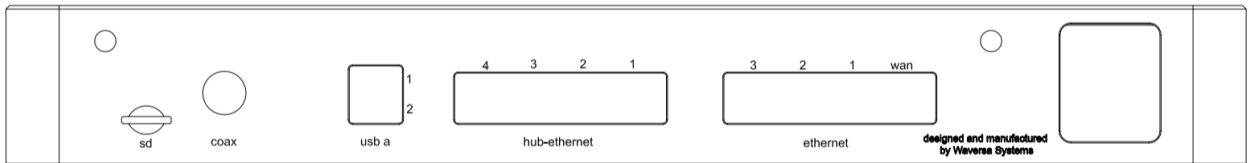
WROUTER

- Front Panel



- ① Power button
- ② IR Receiver
- ③ Status LCD
- ④ Menu button
- ⑤ Select button for menu

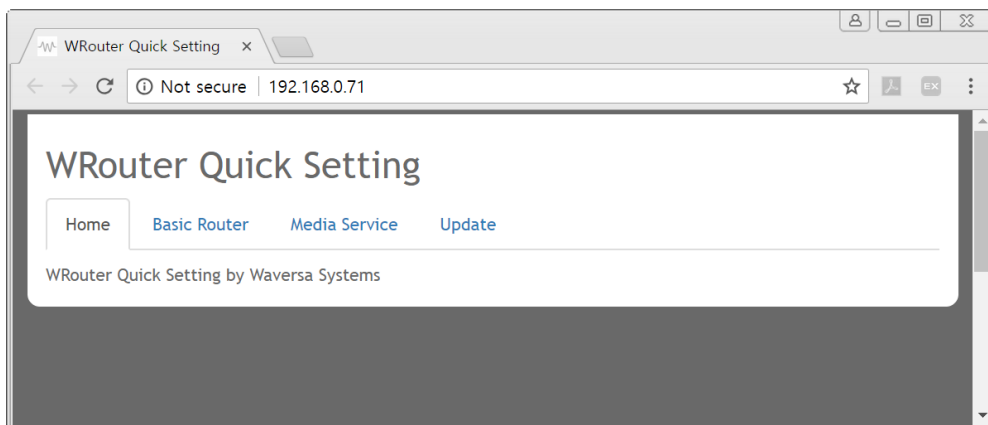
- Rear Panel



- ① Wireless Antenna
- ② SD card for software
- ③ Coaxial output
- ④ 2x USB A ports
- ⑤ 3x Audio Grade Ethernet ports
- ⑥ 3x normal Ethernet ports and 1x WAN port
- ⑦ Wireless Antenna
- ⑧ AC Input and power switch

WROUTER

- Quick Setting



1. Enter IP address of WROUTER to enter Quick Setting page.

WROUTER

- Quick Setting for Router Mode

The screenshot shows the WRouter Quick Setting web interface in a browser window. The address bar shows "192.168.0.71". The page has tabs for "Home", "Basic Router", "Media Service", and "Update". The "Basic Router" tab is active, and the "WROUTER MODE" section is expanded. In this section, the "Router" mode is selected. The "Internet Address" section contains fields for IP Address (192.168.0.71), Subnet Mask (255.255.255.0), Gateway (192.168.0.1), DNS 1 (168.126.63.1), and DNS 2 (168.126.63.2). The "Internet Status" is "Connected". Below this is the "Wireless Network" section with radio buttons for 2.4G (selected), 5G, and OFF. The SSID is "WROUTER" and the Password is masked with dots. The "External Samba Share" section has a dropdown menu showing "WROUTER(Default)". At the bottom are "Apply" and "Set Default" buttons.

WRouter Quick Setting

Home Basic Router Media Service Update

WROUTER MODE

☒ Router ☐ Switch ☐ Hot Spot

Internet Address

IP Address: 192.168.0.71

Subnet Mask: 255.255.255.0

Gateway: 192.168.0.1

DNS 1: 168.126.63.1

DNS 2: 168.126.63.2

Internet Status : *Connected.*

Wireless Network

☒ 2.4G ☐ 5G ☐ OFF

SSID: WROUTER

Password:

External Samba Share

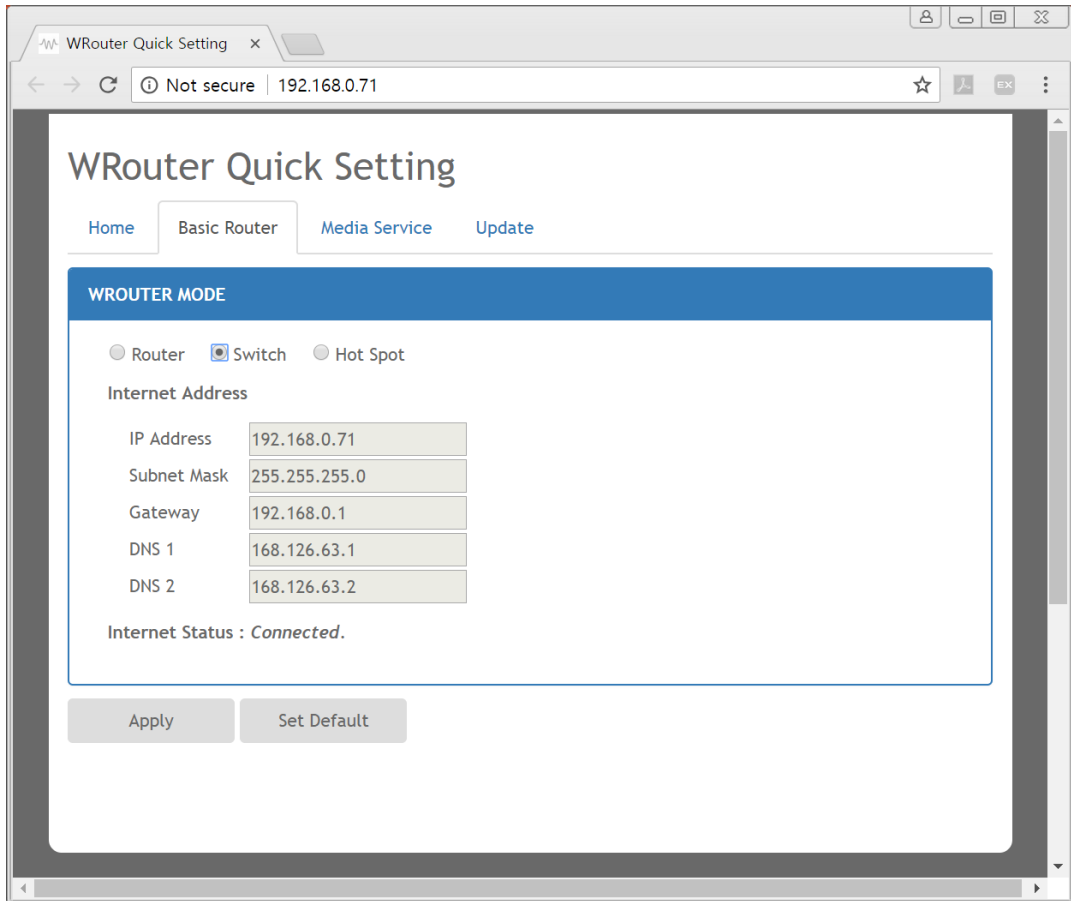
WROUTER(Default)

Apply Set Default

1. Router Mode
2. Choose Wireless Network
3. Choose External Samba Share for external access to NAS.

WROUTER

- Quick Setting for Switch Mode



1. Switch Mode
2. It shows current WROUTER device internet settings
3. "NO NEED SETUP"

WROUTER

- Quick Setting for Hot Spot Mode

The screenshot shows the WRouter Quick Setting web interface in a browser window. The address bar shows '192.168.0.71'. The page has tabs for 'Home', 'Basic Router', 'Media Service', and 'Update'. The 'Basic Router' tab is active, and the 'WROUTER MODE' section is expanded. In this section, 'Hot Spot' is selected with a radio button. Below this, the 'Internet Address' section contains fields for IP Address (192.168.0.71), Subnet Mask (255.255.255.0), Gateway (192.168.0.1), DNS 1 (168.126.63.1), and DNS 2 (168.126.63.2). The 'Internet Status' is shown as 'Connected'. The 'Wireless Hotspot Network' section has fields for SSID and Password. The 'External Samba Share' section has a dropdown menu showing 'WROUTER(Default)'. At the bottom, there are 'Apply' and 'Set Default' buttons.

WRouter Quick Setting

Home Basic Router Media Service Update

WROUTER MODE

☐ Router ☐ Switch ☒ Hot Spot

Internet Address

IP Address	192.168.0.71
Subnet Mask	255.255.255.0
Gateway	192.168.0.1
DNS 1	168.126.63.1
DNS 2	168.126.63.2

Internet Status : *Connected.*

Wireless Hotspot Network

SSID

Password

External Samba Share

WROUTER(Default)

Apply Set Default

1. Hot Spot Mode
2. Choose Host AP and enter password
3. Choose External Samba Share for external access to NAS.

WROUTER

- Quick Setting for Switch Mode

WRouter Quick Setting

Home Basic Router Media Service Update

WROUTER MODE

☐ Router ☐ Switch ☒ Hot Spot

Internet Address

IP Address	192.168.0.71
Subnet Mask	255.255.255.0
Gateway	192.168.0.1
DNS 1	168.126.63.1
DNS 2	168.126.63.2

Internet Status : *Connected.*

Wireless Hotspot Network

SSID

Password

External Samba Share

WROUTER(Default)

Apply Set Default

1. Hot Spot Mode
2. Choose Host AP and enter password
3. Choose External Samba Share for external access to NAS.

Specification for the WROUTER

Operating System	Customized Linux 4.4.0
Core Processor	1GHz ARM CORTEX-A9 Processor
Main Memory	1GB
WiFi	Upto 5G 802.11ac
Built-in Switch Hub	4x battery based ports, 3x normal ports, 1 x WAN port
Power System	Built-in Linear Power Supply
AC Input	110/220V Selectable inside switch
Dimension	350 x 200 x 45 (W x L x H)
Weight	4.0 KG

NOTES: All specifications are accurate at the time of printing.
Waversa Systems reserves the right to adjust specifications without notice.



403, 10-9, Hwangsaoul-ro 258beon-gil, Bundang-gu,
Seongnam-si, Gyeonggi-do, Republic of Korea

<http://www.waversa.com>

email: junho@waversa.com