



WStreamer

Owners Manual

Important Notice

1. Read these instruction manual
2. Keep the manual
3. Keep remind all warnings
4. Follow all instructions
5. Do not use this equipments near water or moisture
6. Clean only with dry cloth
7. Do not block any ventilation openings. Install in accordance with the manufacturer's instructions
8. Do not use near any heat sources such as radiators, stoves or heat registers
9. Use grounding-type plug
10. Use only attachments/accessories specified by the manufacturers
11. Unplug this equipment during lightning storms or when unused for long periods of time
12. Refer all servicing to qualified service personnel. Servicing is required when the equipment has been damaged in any way, such as power-supply cord or plug is damaged, liquid has been spilled or objects have fallen into the equipment, the equipment has been exposed to rain or moisture, does not operate normally, or has been dropped. Manufacturer does not take any responsibility for repairing due to misused operation
13. Do not put any liquid material onto the equipment
14. Remove plug after checking the equipment power is off. Otherwise, it may cause equipment failure.

WARNING: Unqualified personnel are not able to repair this equipments.
To reduce the risk of electric shock, do not open bottom cover on purpose.

About Waversa Systems

Thanks for choosing

Waversa Systems' WStreamer.

Recent development of innovative IT/Digital technology brings vast changes in concept and environment of old Analog based High-end Audio market.

Waversa Systems is leading

New High-end Audio paradigm combining world top class IT with digital technology under the goal of developing sophisticated sound and design.

Waversa Systems is

Happy with your purchasing equipments and promises to become best partners for your audio life.

CEO Junho Shin

Key Feature of WStreamer

- Ethernet to USB/Coaxial Convertor
- DLNA, Roon, AirPlay Support
- Coaxial/USB Output Support
- Automatic Output Detection
- Include Linear Power Supply

WStreamer

- Front Side



- ① Power Supply : 5V
- ② Ethernet Input

- Rear Side



- ① USB A Output
- ② Coaxial Output

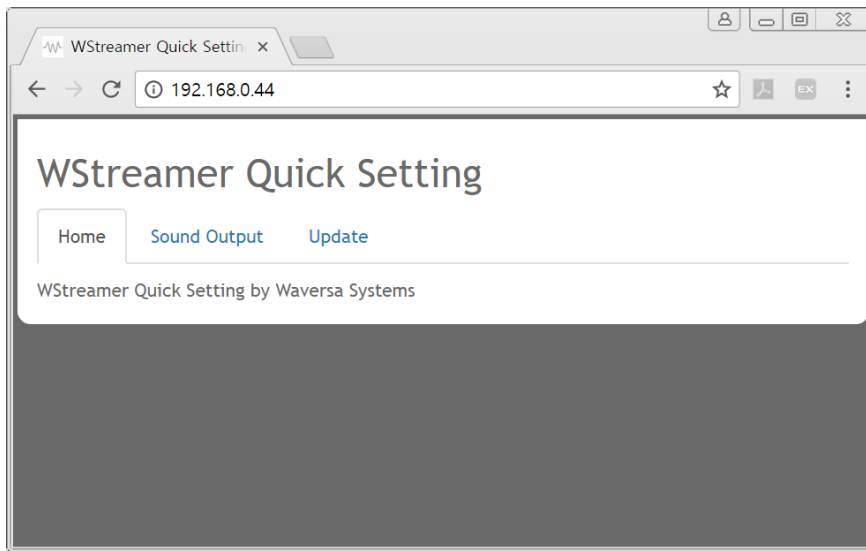
How to USE WStreamer – USB

1. Connect USB cable to DAC
2. Connect Ethernet cable and power supply
3. Use DLNA, Roon, AirPlay Client
4. Automatically detect USB DAC.

How to USE WStreamer - Coaxial

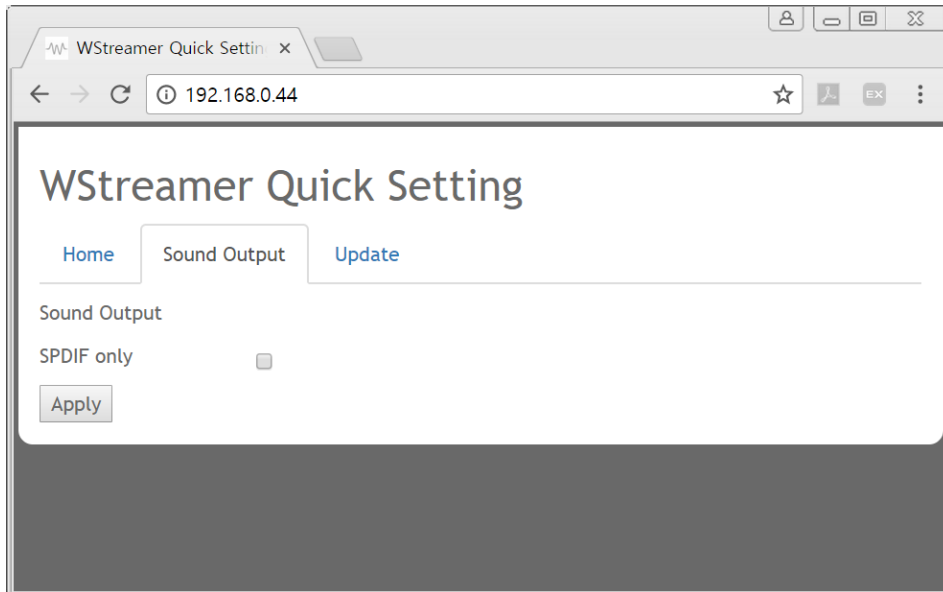
1. Connect coaxial cable to DAC
2. Remove USB cable if connected.
3. Connect Ethernet and power cable
4. Use DLNA, Roon , AirPlay Client
5. If USB cable is connected then coaxial output will not work. If you want to use coaxial even USB cable connected then using Quick setting manually.

WStreamer Quick Setting 1



1. It is possible to connect “WStreamer Quick Setting” page by PC or Mobile devices.
2. Connect WStreamer to router
3. Connect PC or Mobile devices to router
4. Enter IP address of Wstreamer to Internet Browser

Wstreamer Quick Setting 2



1. Check SPDIF Only on “Sound Output” Tab if you want to use SPDIF only
2. Press “Apply” button then Wstreamer became SPDIF Only mode.

Wstreamer Specification

OS	Ultra Lite sized Linux 4.4.0
CPU	AM3358 CortexA8 /TI OMAP1GHz
Audio Output	USB 2.0 / Coaxial
Supported Protocol	DLNA, Roon, AirPlay, WNDR
DC Power Input	Dedicated 5V Linear Power Supply
Size	100 x 100 x 20 (W x L x H)
Weight	0.5 KG
Notice : All specification can be changed without noticed.	



404, 10-9, Hwangsaoul-ro 258beon-gil, Bundang-gu,
Seongnam-si, Gyeonggi-do, Republic of Korea

<http://www.waversa.com>

email: junho@waversa.com