

W
A
D
I
A

8
6
1

C
O
M
P
A
C
T

D
I
S
C

P
L
A
Y
E
R

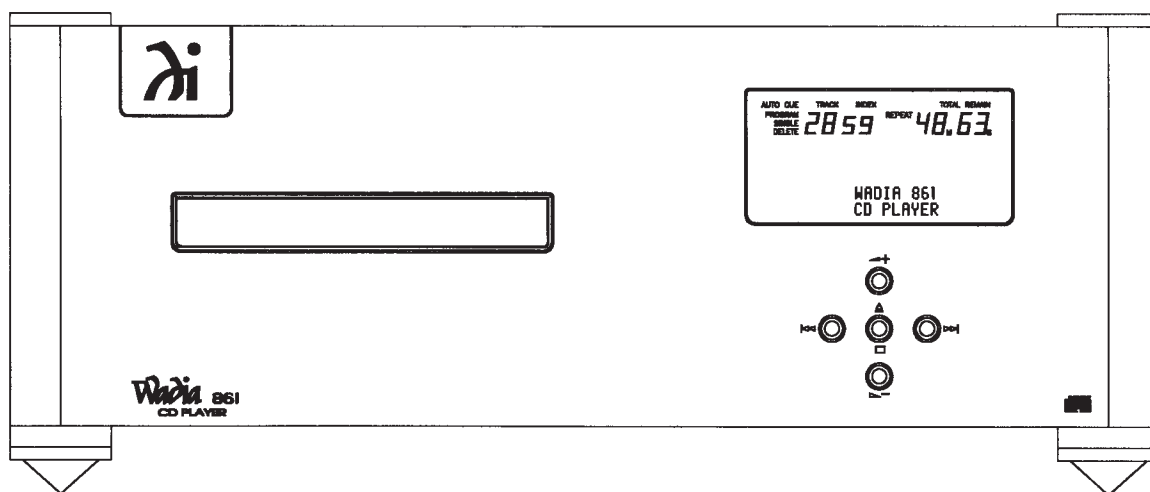


TABLE OF CONTENTS

Preliminaries	Brief History of Wadia	3
Installation and Set-up of your Wadia 861	Unpacking.	4
	Accessories	4
	Unlocking the Transport Mechanism	4
	Installing the Spiked Feet	4
	Connecting to Your System	5
	Connecting to AC Power	5
	Connect Directly to a Power Amplifier	5
	Using with a Preamplifier.	5
	Optimizing the Output Level	6
	Connecting Digital Sources	6
	Choosing a Digital Cable.	6
	Frequently asked questions.	7
General Operation	Front Panel Controls	8
	Display Functions	9
	Remote Control Operation.	10
	Using ClockLink with an External Processor	12
	Menu Screen Map.	14
	Programming the CD Transport.	15
Addendum	Digital Algorithms	17
Appendices	Troubleshooting	18
	Software License Agreement.	18
	Environmental Care	18
	Important Safety Precautions	19
	Specifications	20
	Warranty	20

PRELIMINARIES

All of us at Wadia would like to offer thanks and congratulations to you for purchasing the Wadia 861 Compact Disc Player. We sincerely believe that your Wadia 861 will bring you many years of musical pleasure and satisfaction.

While every new owner is anxious to begin listening, we encourage you to take a few minutes to read this manual and familiarize yourself with the full capabilities of the Wadia 861 Compact Disc Player.



If you are in a hurry to begin listening, please at least read the sections of this manual where the symbol at left is shown.

Brief History of Wadia

Wadia was originally founded in 1988, making it one of the first high-end audio companies dedicated to digital audio. Wadia was formed by a group of telecommunications engineers from the Minneapolis-based 3M Corporation who were committed to using advanced digital technology to improve the performance of digital audio equipment.

Wadia's first product, the Wadia 2000 Decoding Computer, was a breakthrough. For many listeners it proved the viability of Compact Disc as a musically involving format. Since then Wadia has continued to develop new methods and technology. Each product resulted in a new standard of performance for digital audio decoding.

Here is an abbreviated list of the technological innovations Wadia engineers have pioneered:

- Patented DigiMaster up-sampling algorithm, optimized for reproducing music
- First company to apply glass fiber optics to home audio
- Direct-Connect™ system to connect digital audio products directly to amplifier
- ClockLink™ proprietary jitter-reduction technology
- Swift-Current™ zero-feedback current to voltage converter

Although Wadia's digital expertise and track record exceed those of any audio company, technology alone does not guarantee musical performance. Wadia designs are born of a delicate balance of technology shaped by a passion for music.

Wadia is proud to introduce the Wadia 861 CD Player, a breakthrough in sonic performance and value, and a strong statement of our years of dedication to music.

INSTALLATION AND SET-UP

Unpacking

Use care in unpacking your Wadia 861 Compact Disc Player. Inspect it for any shipping damage and call your dealer immediately if any is found.



Do not plug your Wadia 861 Compact Disc Player into an AC outlet if you find shipping damage.

We advise saving all packing materials so that the unit can be easily and safely shipped if the need arises.

Accessories

Provided with the Wadia 861 are the following accessories:

- AC power cord
- Four spiked feet with threaded studs
- Four steel coasters
- RCA/BNC adapter
- Transport Key (for locking/unlocking transport)
- Remote Control
- Three type AAA batteries



Do not tip the unit onto the back panel. This can damage input and/or output connectors.

Unlocking the Transport Mechanism

Place the Wadia 861 on its side on a surface that will not scratch the side panel. Use the key found in the accessories kit to unlock the transport laser assembly as shown on the label on the bottom of the unit.

(Note: the transport key need only be turned a small distance to either lock or unlock the transport.)



In the event that the unit requires shipping, the transport must be returned to the locked position.

Installing the Spiked Feet

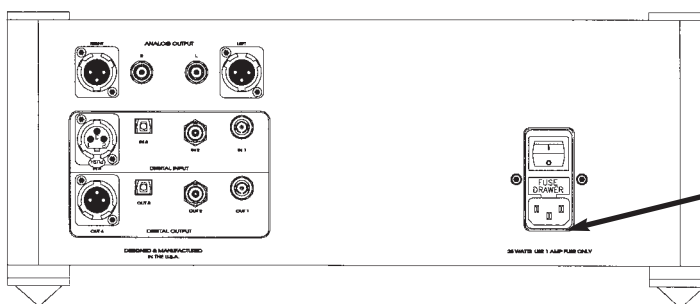
With the unit still positioned on its side, screw one of the spiked feet into the bottom of each corner post.

Position the Wadia 861 where you would like it to reside in your system. We recommend choosing a solid, non-resonant, level surface for best performance. If this surface is susceptible to damage, place one of the steel coasters under each spiked foot.



When positioning the Wadia 861, do not tilt the unit forward as it may cause the laser assembly to become lodged in the disc clamping system.

CONNECTING THE WADIA 861 TO YOUR SYSTEM



Check to make sure your Wadia 861 Compact Disc Player has been manufactured for operation at your AC line voltage. Attempting to use this Compact Disc Player at any voltage other than specified on the rear of the unit may damage the unit. Damage caused by improper operation is not covered by warranty. If the voltage specified is different from your AC voltage, contact your Wadia dealer.

Connecting the Wadia 861 to AC Power

The best performance is obtained when the Wadia 861 is plugged directly into the wall with the power cord provided. The Wadia 861 has power conditioning, surge suppression and an extremely sophisticated overall protection scheme. It should not be necessary to use surge protectors, power conditioners or aftermarket power cords, some of which may degrade sonic performance. If you wish to experiment with any of these devices, work closely with your dealer – and most of all, trust your own ears.

Connecting Directly to a Power Amplifier

Avoid allowing static shocks to be applied to the inputs or outputs. To prevent static shocks, touch any grounded surface, such as the Wadia 861 chassis, before connecting or removing a cable. It is unlikely that a static shock will damage the unit, but it may cause the Wadia 861 circuitry to “lock-up” (see **Lock-Up** under **Trouble Shooting**).

Inputs and outputs can be safely connected to the Wadia 861

1. Before the unit is powered up
2. When the unit is in Relay-Mute mode
(See **Mute Modes** in **General Operation**)

We strongly recommend that you use your Wadia 861 connected directly to your power amplifier. Even if you purchased your Wadia 861 with the intention of connecting it to your preamplifier, we suggest that you try direct connection to your amplifier. Many listeners are surprised by the improvement in performance over even the most expensive preamplifiers.

To connect your Wadia 861 to a power amplifier, ensure that your power amplifier is turned off, then connect your analog interconnects from the Wadia 861 analog outputs to the amplifier's inputs.

Using the Wadia 861 with a Preamplifier

While the Wadia 861 was designed to be used without a preamplifier, no compromises were made in its design that will prevent excellent operation in a conventional system with a preamplifier.

When using a preamplifier, set the Wadia 861 volume control to its maximum level.

Optimizing the Output Level

Best performance is obtained when operating the Wadia Volume Control near the top of its range. If needed, the maximum output level of your Wadia 861 can be adjusted to match the overall sensitivity of your system so that the critical listening will take place with the volume control operating in near the top of its range.

The maximum output level of the Wadia 861 is adjustable by means of a set of internal switches. The Wadia 861 is factory set to accommodate the most common range of system sensitivity. If you find that your typical volume level during critical listening is below 65 on the volume display, it will be advantageous to use a different setting. To change the output level, consult your dealer.

Connecting Other Digital Sources to your Wadia 861

Your Wadia 861 is equipped with digital inputs which can accept digital signals from any of the established digital formats.

- Input 1: Glass-fiber optical
- Input 2: Coaxial with BNC connector
- Input 3: Plastic-optical TOSLINK
- Input 4: AES/EBU with XLR connector

The Wadia 861 digital inputs will decode any word length up to 24-bit, and any of the standard digital audio sampling frequencies up to 96kHz.

Choosing a Digital Cable

While the Wadia 861 supports all currently accepted transmission formats for digital audio, we recommend using a high quality glass-fiber cable such as the one available from Wadia. Wadia Digital was the first company to use glass fiber-optic data transmission in digital audio. We have continually improved this format and believe that it offers the best, most consistent performance of all the available options.

Based on our experience, here is a list of digital interface methods in descending order of performance:

1. Glass optical (as implemented by Wadia)
2. AES/EBU using XLR connector
3. Coaxial cable using BNC connector
4. Coaxial cable using RCA connector
5. TOSLINK plastic-optical cable

The quality of any of these transmission methods depends on the quality of the cable and the sophistication of the transmitter and receiver.

For example, a high quality coaxial cable can outperform a low quality AES/EBU cable. A high quality AES/EBU cable will outperform a poorly implemented glass optical system.

If you are using a coaxial cable we recommend that you have the cable terminated with a BNC connector. This will provide higher performance than an RCA connector. Your Wadia 861 comes with an RCA/BNC adapter that can be used for experimentation between different types of coaxial cable.

Again, we highly recommend that you take advantage of your dealer's experience and, most importantly, *trust your ears*.

All XLR-type inputs and outputs on the Wadia 861, both digital and analog, use the standard audio pin configuration:

- Pin 1 - Ground
- Pin 2 - Positive signal
- Pin 3 - Negative signal

FREQUENTLY ASKED QUESTIONS

Should I use a Balanced or Unbalanced connection?

If your amplifier has a true balanced input, we recommend you use the balanced analog output from your Wadia 861 Compact Disc Player.

All things being equal, properly implemented balanced (also called differential) circuitry sounds better than unbalanced circuitry. The Wadia 861 is a true balanced design. It generates the inverted signal in the digital domain and all subsequent processing is done in balanced mode.

Your Wadia 861 is designed to maintain many of the advantages of true balanced design when using the unbalanced outputs. In addition, the Wadia 861 output stage is capable of driving both types of outputs simultaneously.

Why should I bypass the Preamplifier?

A preamplifier is unnecessary when using your Wadia 861 Compact Disc Player. The Wadia 861 provides all the necessary control functions of a preamp while the signal is still in the digital domain. This avoids the sonic degradation caused by analog circuitry, switches, and wire. The Wadia 861 output stage can drive any power amplifier and any interconnects, even very long lengths.

Does the Wadia Volume Control compromise resolution?

The Wadia 861 uses the latest generation of Wadia's proprietary digital volume control. The volume level can be varied in the digital domain by means of mathematical manipulation of the signal, eliminating the distortion and noise that are inevitable with even the best analog volume controls. While conventional thinking indicates that reducing the volume digitally can sacrifice low level resolution, Wadia has created an innovative solution. Wadia's patented digital filtering algorithm produces a 24 bit output rather than the 16 bits stored on the CD. This high-resolution signal is then used in the computations which in turn reduce the volume level. This new signal is fed directly to the DAC chips. Through this innovative method, the Wadia 861 maintains high resolution even at the lowest volume control settings.

Can I bypass the Wadia Volume Control?

Because the Digital Volume control does not include any analog circuitry, there is none to be bypassed. Even the mathematical program step that performs the Digital Volume Control calculation is an integral part of the Wadia DigiMaster filter algorithm and therefore cannot be bypassed.

If you do not need the Wadia Volume Control, set it to its maximum level of 100 on the display.

What about Analog Sources?

In order to fully realize the potential of this type of system, Wadia has a range of Analog-to-Digital converters. Now it is possible to use analog sources, such as a tuner, tape deck, or even a turntable (in conjunction with a suitable phono stage) in your system without using a conventional analog preamplifier. Consult your dealer for more information on the Wadia Analog-to-Digital products.

Should I leave the Wadia 861 with the power on?

The Wadia 861 is designed to be left with the power on with no harm or wear to the unit. All motors and laser circuitry turn off when the unit stops playing. If desired, the front display can be turned off (see ***Turning off the Display under Remote Operation***). Leaving the power on allows the circuitry to remain in thermally stable, which provides better performance and longer life. Careful listeners will notice that the sound of the Wadia 861 will improve steadily after the unit is powered-up. A new unit will undergo more dramatic changes when power is applied for the first time. If you turn off your Wadia 861 for more than an hour, you will find that the unit will undergo similar, but less dramatic improvement once power is reapplied.

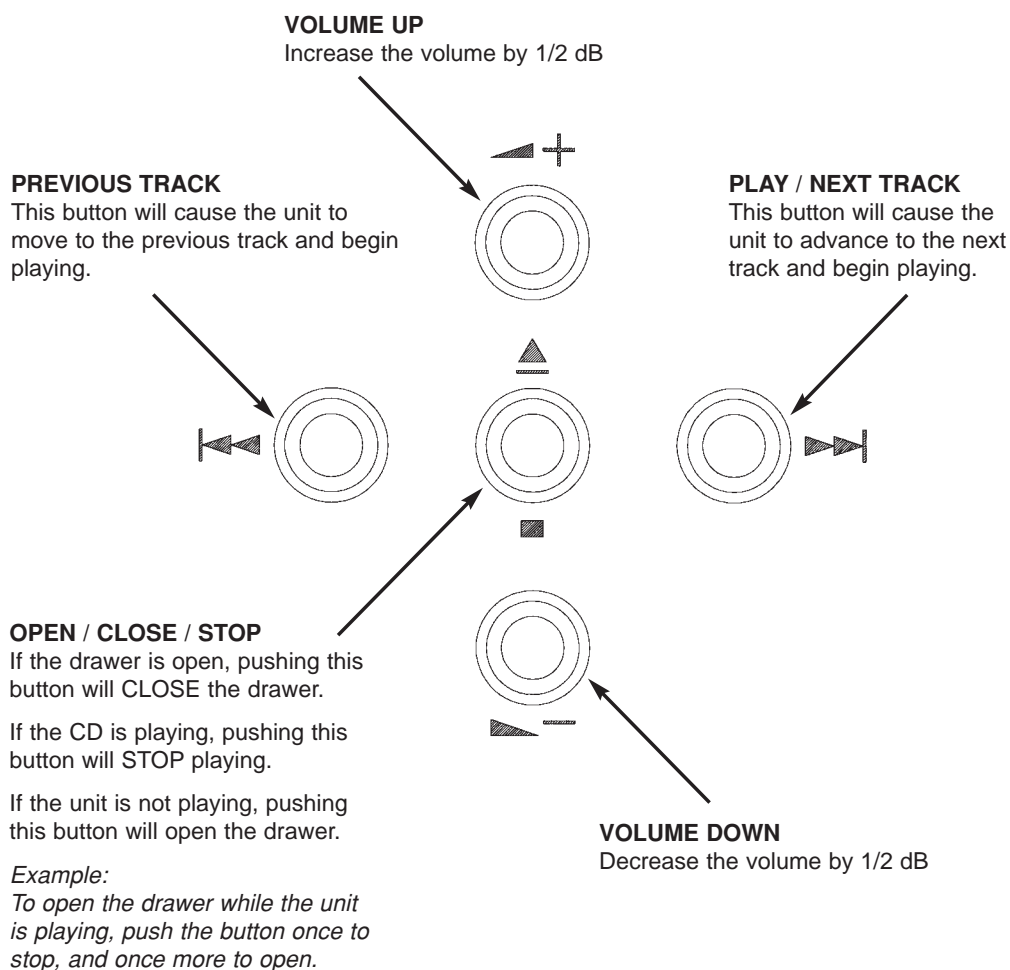
GENERAL OPERATION

Turning on the Wadia 861

Using the switch located directly above the AC power input, turn the switch to the ON position.

FRONT PANEL CONTROLS

The front panel of the Wadia 861 features basic controls that allow you to operate basic functions without using the Remote Control.



DISPLAY FUNCTIONS

The Wadia 861 features a two part display screen. The top section shows the status of the CD transport. The bottom of the display indicates preamp functions, as described below.

Turn-on Screen

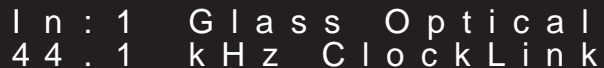
This screen is displayed each time the Wadia 861 is powered-up. After five seconds, the display will change to the Input screen with CD input selected, then change again to the Volume screen with the volume set to Zero.



W a d i a 8 6 1
C D P l a y e r

Input Screen

The Input screen shows which input is currently selected. It also indicates whether ClockLink is engaged and the sampling frequency. If there is no signal connected to the selected input, the display will read, "No Data."



I n : 1 G l a s s O p t i c a l
4 4 . 1 k H z C l o c k L i n k

Status Screen

The Status screen indicates whether the status is Phase Normal or Inverted, and whether the CD was recorded using digital high frequency emphasis.



P h a s e : N o r m a l
E m p h a s i s : N o

Volume Screen

The Volume screen shows the right and left channel volume level. If the output is muted, the display will indicate this by showing, "MUTE."

During normal listening, the display will show the Volume screen. If a new input is selected, the screen will change to show the Input screen for five seconds before returning to the Volume screen.



L e f t L e v e l R i g h t
1 0 0 1 0 0

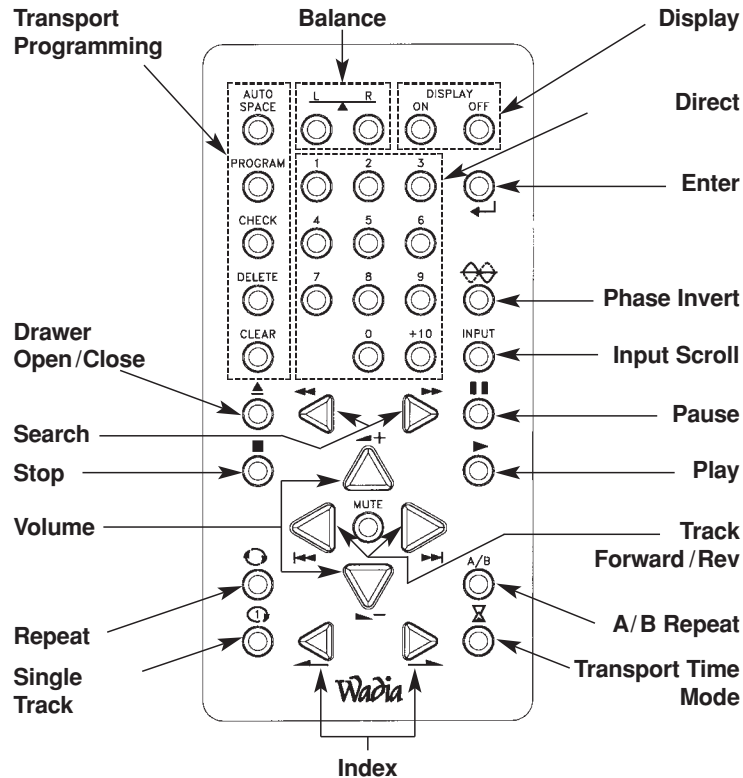
Changing between Display Screens

Anytime a button is pressed, the Wadia 861 display automatically switches to the appropriate screen to display the change. For example, pressing the balance controls on the remote control will switch the 861 display to the Balance screen. After five seconds, the display will return to the Volume screen.

Also, pressing the enter button will cause the display to change to the next screen. Repeatedly pressing the enter button will cause the display to continue to change to successive screens, as shown in the Menu Map on page 14.

REMOTE CONTROL OPERATION

The Wadia 861 remote control requires three type-AAA batteries, which you will find in the accessories kit. To install the batteries, remove the battery cover on the back of the remote by removing the phillips head screws. Insert the batteries as indicated on the battery holders.



Adjusting the Volume

Whenever the volume control buttons are pressed, the volume for both channels will be increased or decreased by an increment of 1 on the display screen. The range of the volume control is from 1 to 100, with each step representing 0.5 dB change in volume.

Adjusting the Balance

Relative volume of each channel can be adjusted via the balance control buttons on the remote. Pressing one of the balance buttons increases the volume on that channel relative to the other by an increment of 0.2 on the display. This corresponds to a 0.1 dB change. The next time the button is pressed the opposite channel is decreased. This way the overall volume level (the sum of the two channels) remains constant within 0.1 dB.

Selecting an Input

The Wadia 861 has four digital inputs, plus the internal CD drive. Any of the inputs can be selected from the remote control by pressing the input button. Each time the input button is pressed, the next input is selected. For example, if you are listening to CD input and you press the input select, Input 1 will be selected, press it again, and Input 2 will be selected and so on. After Input 4, the list will begin again with the CD input.

Whenever you select a new input, the display will switch to the Input Screen.

Inverting Absolute Phase

The Wadia 861 has the ability to invert absolute phase in the digital domain. Pressing the Phase Invert button on the remote control will cause the Wadia 861 to invert phase; pressing it again will switch the phase back to normal. If the Wadia 861 is in Phase Invert mode, this will be indicated on the Input Screen of the display.

Turning Display On/Off

By pressing the Display On or Off button, the Wadia 861 display can be turned off completely.

If the display is turned off, it will reappear briefly whenever a Wadia 861 function button on the remote control is pressed.

Mute Modes

The Wadia 861 has two mute modes that are automatically implemented under different circumstances.

DSP-Software Mute

When the Mute button is pressed on the remote control, the Wadia 861's DSP engine transmits a stream of zero signal level samples to the DAC section, which results in zero output.

Output-Relay Mute

The Wadia 861 Compact Disc Player has mute relay connected between the positive and negative outputs. When this relay is engaged, it connects the positive output to the negative output, reducing the output to zero. This relay, which produces an audible click when it engages or disengages, is not in the music signal path. The mute relay is engaged:

1. When the Wadia 861 detects AC input level below its minimum operating range.
2. Each time the Wadia 861 power switch is turned on.
3. When the volume control is set to zero AND the mute button on the remote control is pressed.

When the Wadia 861 is in *either* Mute Mode, the Volume Screen will indicate this by Displaying the word, "MUTE."

INDEX/FORWARD/REV: Pressing these buttons allows access to the previous or next index point within a track that has such indexed sections.

TRACK FORWARD/REV: Pressing these buttons allows access to the previous or next track on a disc.

SEARCH/FORWARD/REV: Pressing these buttons allows fast reverse or fast forward access through a track.

STOP: Pressing this button while a Compact Disc is playing stops PLAY.

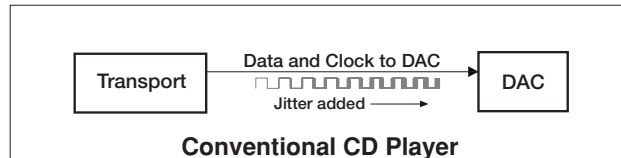
PAUSE: Pressing this button, while a Compact Disc is playing, suspends PLAY. Pressing the PLAY button or the PAUSE button will resume play at the point where the pause button was pressed.

PLAY: After a Compact Disc has been loaded into the drawer, pressing this button plays the disc beginning with the first track on the disc or in a sequenced program. Pressing this button while the drawer is open, closes the drawer and begins play with the first track on the disc or in a sequenced program.

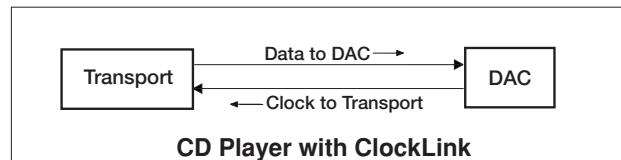
USING CLOCKLINK WITH AN EXTERNAL DIGITAL PROCESSOR

Theory of Operation

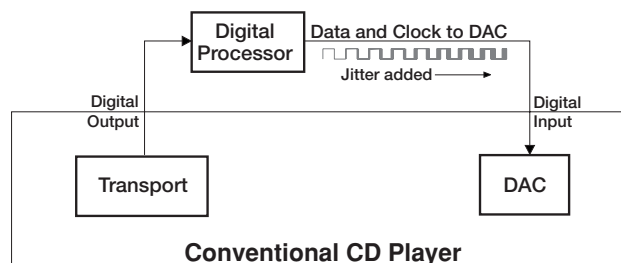
ClockLink eliminates jitter added when the clock signal is recovered from the digital data stream. In a non-ClockLink system, jitter is added when the clock signal is embedded in the data stream and transmitted to the DAC. When the clock signal is recovered from the data stream (as shown below), and used to clock the DAC output, this jitter degrades the sonic performance.



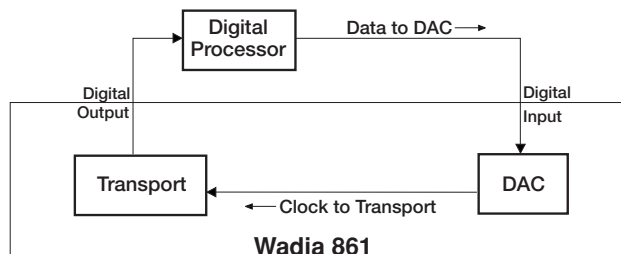
With ClockLink, the clock is not recovered from the data. Instead, the master clock is located at the DAC. This clock signal is transmitted to the transport to keep it synchronized with the DAC. Because the recovered clock is ignored, any jitter on that signal does not affect the sonic performance.



The Wadia 861 with its digital inputs and outputs can be used with a digital signal processor such as a digital equalizer. Digital processors allow the signal to be modified without adding analog noise and distortion. However, digital processors can add jitter, as shown below, causing noticeable sonic degradation.



Using ClockLink with an external processor, the Wadia 861 ignores the incoming clock and uses the master oscillator at the DAC. As a result, jitter added by the external digital processor does not affect sonic performance.



Configuring Digital Inputs for ClockLink

To utilize ClockLink with an external processor, the Wadia 861 digital inputs must be configured for ClockLink as described below.

Use the Enter button to scroll through the display menus until you reach the configuration menu for the input you wish to configure. Shown below is the configuration menu for Input 1:

```

          C o n f i g u r e
I N   1 : C L O C K L I N K O F F
  
```

Use the Volume Up or Volume Down button to change to ClockLink ON. Press the Mute button to save the configuration.



Note: Using ClockLink with a source other than the internal CD transport will result in unpredictable, degraded performance.

ClockLink should only be used when using an external processor which is being fed by the 861 internal CD transport. For all other applications, inputs should be configured with ClockLink OFF.

The Wadia 861 has several features to prevent ClockLink from being engaged when it should not be. First, whenever the input signal is other than 44.1 kHz sampling frequency, the Wadia 861 will automatically revert to recovered clock mode. Second, if the internal transport is not running, the Wadia 861 will revert to recovered clock mode.



Note: All inputs on the Wadia 861 are factory configured for ClockLink OFF.

ClockLink Status Indication

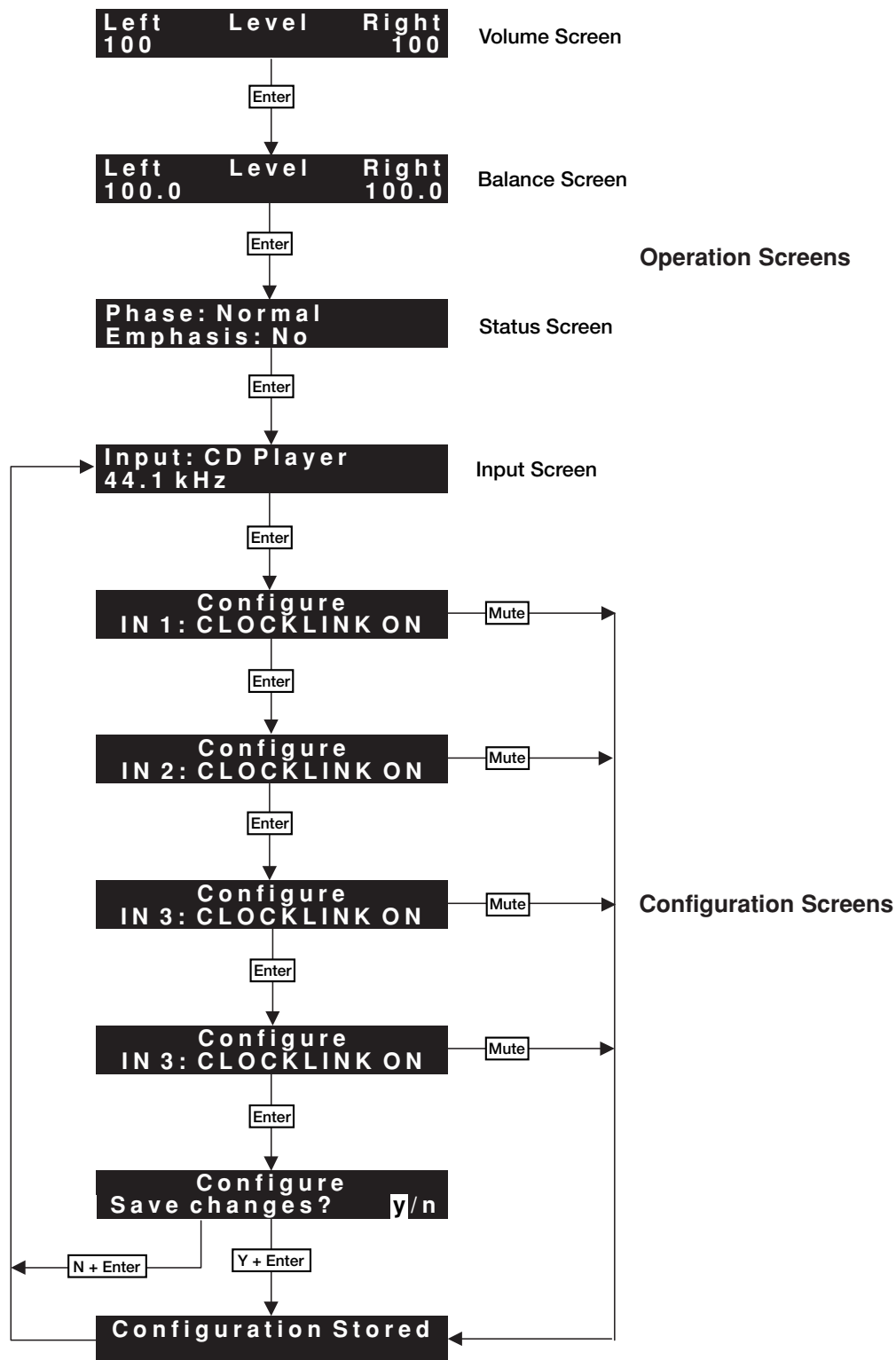
When the Wadia 861 is operating in ClockLink mode, the Input screen will indicate this as shown below:

```

I n : 1   G l a s s   O p t i c a l
4 4 . 1   k H z   C l o c k L i n k
  
```

Even if an input is configured for ClockLink, the Status screen will only indicate ClockLink if it is currently engaged. For example, if an input is configured for ClockLink, and the Wadia 861's internal CD transport is turned off, then the display will not indicate ClockLink.

WADIA 861 MENU SCREEN MAP



PROGRAMMING THE CD TRANSPORT

Program: Pressing this button enters all tracks subsequently chosen with the numeric buttons (up to a total of 20 selections) as part of a programmed sequence.

Programming a sequence of tracks can be done either in the stop mode or in the play mode.

To program a sequence of tracks from a Compact Disc while in the stop mode, first press the program button. The program indicator will illuminate in the display window. Next, press the numeric buttons of the tracks you would like to program in the sequence desired. The number of each selected track will be indicated under the track indicator, the location of that track within the program (the playing order) of the tracks selected will be indicated in the area where index is usually identified, and the total program playback time of the sequence will be updated as each track is programmed.

To program a sequence of tracks from a compact disc while in the play mode, the procedure is the same. The only difference is that the total program's playback time will not be displayed.

A program will continue to be held in memory, even after that program has been completely played.

When programmed playback is ended by pressing the stop button, the program will continue to be held in memory. However, if the stop button is pressed a second time, the programmed contents will be erased from memory.

To exit the Program mode, press the program button again.

Single: To play a single track, press the single button (the single indicator will light in the display window), then press the numeric button(s) which correspond(s) to the track you would like to play. The transport will search for the selected track, and playback will start from the beginning of that track. At the conclusion of the track, the transport will stop.

To repeat a single track, press the single button (the single indicator will illuminate in the display window), then press the repeat indicator (the repeat button will illuminate in the display window), and then press the numeric button(s) which correspond(s) to the track you would like to repeat. Playback of the track selected will begin immediately.

Delete: This button is the opposite of normal programming. Pressing this button while a program is being entered erases the entire entered program. To play an entire disc, except for specific tracks that you do not want to hear, press this button and then the numeric buttons corresponding the tracks you would like to delete (up to 20 selections).

Clear: When the program indicator is illuminated in the display window. To eliminate a particular track from a programmed sequence, first press the check button until the track which you would like to eliminate is selected. Then press the clear button which will clear that particular track from memory.

Time: This button switches between the various time modes on the display. Before play, the total time on the disc, or in a sequence program, is shown. Once a disc starts to play the elapsed time of that track will be shown. Pressing the button on the remote control once will cause the display to indicate the remaining time in that track (remain). Pressing this button on the remote control again will cause the display to indicate the remaining time on the entire disc, or in a sequenced program (total remain).

Auto Space: Pressing this button will provide a four second space between tracks on disk, irrespective of the actual time between tracks on disc.

Check: When a sequence of tracks has been programmed, the check button can be used to review the contents of that program. After a program has been entered, but before playback has begun, by pressing the check button once, the first programmed track number, its position in the sequence of tracks that have been programmed, and the playing time of the entire sequence, will be displayed. Each subsequent pressing of the check button will provide similar details as you move through each of the programmed tracks.

The programmed contents of a sequence can also be checked during playback, however, the total program's playback time will not be displayed.

Repeat: Pressing this button will cause the entire disc to repeat continuously. Pressing this button a second time will take the transport out of the repeat mode. Pressing this button once, following pressing the single button, will cause the track that is playing, or has been selected, to repeat continuously.

A/B: This button is used to define a section of a disc that is to be repeated continuously. Pressing this button once defines the beginning point (A) of the section to be repeated and pressing this button again defines the ending point (B) of the section repeated.

DIGITAL ALGORITHMS

In the Wadia 861 there are three user-selectable digital algorithms that can be used to optimize the sonic performance based on system matching and personal musical priorities.

The three algorithms in the 861 all upsample to 32x the CD input rate (1.4112 MHz DAC sample rate), but differ in their time and frequency domain characteristics. They are:

- Algorithm A** Digimaster v2.4. Wadia's classic time-domain interpolation algorithm delivers a robust sound with extraordinary image focus and re-creation of recorded space.
- Algorithm B** Provides a more extended top end than Algorithm A, with superior time-domain performance compared to conventional CD filters.
- Algorithm C** Retains the high frequency extension and superior detail resolution of Algorithm B, but with a more relaxed presentation overall.

The selected algorithm is used for 44.1 kHz (CD) and 48 kHz sources, either from the internal CD transport or any of the four digital inputs. For 88.2 kHz and 96 kHz sources, Digimaster v2.4 is always used as it provides the best performance at high-sample rates.

We encourage you to become familiar with the unique sonic performance of each of these algorithms and enjoy the one that brings you optimum musical pleasure.

SELECTING AN ALGORITHM

To change the digital processing algorithm, press the Enter button on the remote control repeatedly to bring up this configuration screen:



The selected algorithm is shown on the second line of the display. Use the Up and Down Volume buttons to scroll to the desired algorithm, then either press the Mute button or the Enter button to navigate to the 'Save Changes?' screen and choose 'Yes'. The display will indicate 'CONFIGURATION STORED' and the output of the 861 will mute for 5-10 seconds while the selected algorithm is downloaded to the two DSP computers.

PERFORMING ALGORITHM COMPARISONS

When comparing processing algorithms it is important to adjust the volume to compensate for the different gains of the algorithms. Without this adjustment the one which is louder will usually sound better in a short-term A/B comparison.

In the 861, algorithm A has approximately 1 db higher output level than B and C (which are within 0.1 db of each other). To compensate for this higher level, increase the indicated volume setting by 2 units for algorithms B and C when comparing them with A.

APPENDICES**Enabling/Disabling
the Digital Outputs**

The Wadia 861 is designed in such a way that the unused digital outputs can be disabled. This can result in slightly better overall performance. See your dealer for information about these internal adjustments.

Troubleshooting**Lock-up**

If the Wadia 861 experiences a powerful static shock or sudden AC surge, it is possible to “lock-up” the computer circuitry. A locked-up computer may result in erratic display, no output, and no response to remote commands.

If your Wadia 861 should lock-up, unplug the AC cord. Wait at least 30 seconds before re-plugging in the unit. If the unit still does not operate normally, contact your dealer.

**Software License
Agreement**

IMPORTANT! THIS AGREEMENT SETS FORTH TERMS AND CONDITIONS FOR THE DigiMaster SOFTWARE.

The DigiMaster software is copyrighted and patented. It is the property of Audio Video Research Incorporated, Ann Arbor, Michigan.

Title to Licensed Software is not transferred to the customer. The customer is granted a nonexclusive license to use the Licensed Software only on this Wadia 861 CD Player.

At Wadia's sole discretion, Wadia may provide customer with updates of the Licensed Software. Wadia retains the right to provide the Licensed Software updates for a fee. The customer may refuse to accept such Licensed Software updates.

Environmental Care

Audio Video Research Incorporated makes every effort to be an environmentally conservative company. We appreciate it if our customers join our efforts. Please dispose of batteries in a manner that is environmentally responsible.

**! IMPORTANT SAFETY PRECAUTIONS !**

To get the best performance from your Wadia 861 CD Player, and for your own safety, please read and follow these important safety instructions.

1. Before operating the Wadia 861 please read all operating and safety instructions.
2. Never place the Wadia 861 near heat sources such as radiators, fireplaces, stove, or other appliances that produce heat. Avoid placing the Wadia 861 where it will be subject to direct sunlight or low temperatures.
3. This product is equipped with a three prong AC power cord which includes an earth ground connection. To prevent shock hazard, all three connectors must always be used. If your electrical outlets will not accept this type of plug, an adapter may be purchased. If an adapter is necessary, be sure it is an approved type and that it is used properly, supplying an earth ground. If you are not sure of the integrity of your home's electrical system, contact a licensed electrician for assistance.
4. AC extension cords are not recommended for use with this product. If an extension cord must be used, be sure it is an approved type and has sufficient current carrying capacity to power this product.
5. Before cleaning the Wadia 861, always disconnect the power supply cord. Use a soft cloth and, if necessary, dampen with plain water. Never apply water, or any other cleaner, directly to the chassis.
6. If you smell smoke, or an abnormal smell, immediately unplug the Wadia 861 from the power supply and contact your Wadia dealer.
7. Unplug unit if it becomes wet.
8. Replace fuse only with the exact type originally included.
100 volt: (1) 1 amp Slo-Blo
120 volt: (1) 1 amp Slo-Blo
220 volt: (2) 1/2 amp Slo-Blo
240 volt: (2) 1/2 amp Slo-Blo
9. THERE ARE NO USER SERVICEABLE PARTS INSIDE THE WADIA 861 CD PLAYER!
 - Do not attempt to repair or modify your Wadia 861.
 - All service should be performed by qualified service personnel.
 - Do not open the unit while it is attached to the AC outlet.

SPECIFICATIONS

Decoding Software	3 user selectable upsampling algorithms including DigiMaster v2.4
Digital Processing Capability	24 Bits
Digital Resolution	21 Bits
Analog Outputs	One pair of Balanced (XLR); One pair of Unbalanced (RCA). Both can be used simultaneously.
Digital Outputs	1 - Glass Fiber-Optic (ST), 1 - AES/EBU (XLR), 1 - SP/DIF (BNC), 1 - Plastic Optical (Toslink).
Digital Inputs	1 - Glass Fiber-Optic (ST), 1 - AES/EBU (XLR), 1 - SP/DIF (BNC), 1 - Plastic Optical (Toslink).
Output Impedance	51 ohms
Power Consumption	25 watts
Weight	48 lbs. Unit itself; 55 Lbs. Shipping Weight
Dimensions	17" Wide, 16" Deep (not including connectors), 7" High (including spiked feet)

WARRANTY

This Warranty covers the Wadia 861 Compact Disc Player. Wadia warrants that this product shall be free from defects in materials and workmanship for:

**1 year for the transport mechanism's mechanical structure and associated electronics,
and 5 years for all other parts of the product (excluding batteries).**

The warranty period begins at the date of first sale by an authorized Wadia dealer and is subject to the following requirements and understandings:

- 1) The product must not have been modified in any manner whatsoever, or the warranty is immediately voided.
- 2) The product must not have been stored in humid, damp environment; nor subjected to weather, water, or salt spray.
- 3) During the warranty period Wadia will repair the Wadia 861 Compact Disc Player to working order, or, at Wadia's option, replace a defective Wadia 861 with a similar available product, at no cost to the owner for labor, materials, and shipping charges from Wadia,.
- 4) Wadia shall not, under any circumstances, be liable for any incidental or consequential damages arising from the loss of property or other damage or losses due to the failure of a Wadia 861. Wadia will not pay for loss of use or inconvenience caused by the failure of a Wadia 861. Wadia will not pay for damage caused to other audio components caused by the failure of the Wadia 861 within the limits allowed by State Law.
- 5) All repairs performed after the warranty period has expired will be billed to the owner and will carry a 90 day warranty on parts and labor.
- 6) The customer is responsible for the shipping charges for all repairs, warranty or non-warranty, shipped to Wadia. Wadia will pay return shipping to the customer or dealer (within the United States) for all warranty repairs. Special shipping methods or services will not be covered by Wadia.
- 7) All repairs must be serviced by Wadia or an authorized service facility.
- 8) This product is only warranted in the country of original sale by Wadia.



Wadia

795 Highland Drive Ann Arbor MI 48108 734.975.4217 tel 734.975.4299 fax www.wadia.com